

**SEVENTH FRAMEWORK PROGRAMME
THEME 6: Environment (including climate change)**

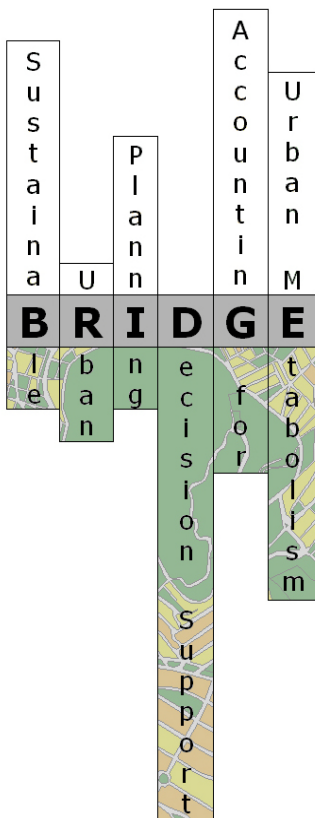


Contract for:

Collaborative Project

D.3.3.2

GIS data and maps on spatial, socio-economic development and impact indicators



Project acronym: BRIDGE
Project full title: sustainaBle uRban planning Decision support accountinG for urban mEtabolism
Contract no.: 211345
Date: 30/11/2010
Document Reference: 211345_009_TR_IETU
Book Captain: Tomasz Staszewski (IETU)
Authors: Anicenta Bubak (IETU)
Hanna Ristisuo (UHEL)
Afroditi Synnefa (NKUA)
Sue Grimmond (KCL)
Piero Toscano (CNR)
Contributors: Stathopoulou Marina (NKUA)
Sean Beevers (KCL)
Gail Taylor (SOTON)
Matthew J. Tallis (SOTON)
Nektarios Chrysoulakis (FORTH)
Barbara Jaros (IETU)
Joachim Bronder (IETU)
Joanna Piasecka (IETU)
Justyna Gorgoń (IETU)
Zina Mitraka (FORTH)
Issue: 1.0
Deliverable no.: D.3.3.2
Dissemination Level: CO



BRIDGE

GIS data and maps on spatial, socio-economic development and impact indicators

Deliverable no.: D.3.3.2
 Contract no.: 211345
 Document Ref.: 211345_008_TR_IETU
 Issue: 1.0
 Date: 30/11/2010
 Page number: 2/39

Document Status Sheet

Issue	Date	Author	Comments
1.0	Sept. 24/2009	Tomasz Staszewski	
1.0	Sept. 24/2009	Anicenta Bubak	
1.0	Sept. 24/2009	Barbara Jaros	
1.0	Sept. 24/2009	Joachim Bronder	
1.0	Sept. 24/2009	Joanna Piasecka	
1.0	Sept. 24/2009	Hanna Ristisuo	
1.0	Dec. 06/2009	Sue Grimmond	
1.0	Dec. 06/2009	Sean Beevers	
1.0	Dec. 06/2009	Gail Taylor	
1.0	Dec. 06/2009	M J. Tallis	
1.0	Dec. 14/2009	Afroditi Synnefa	
1.0	Dec. 14/2009	Stathopoulou Marina	
1.0	Dec. 14/2009	Justyna Gorgoń	
1.0	Dec. 16/2009	Piero Toscano	
2.0	Oct. 10/2010	Piero Toscano	
2.0	Oct. 19/2010	Tomasz Staszewski	
2.0	Oct. 19/2010	Joachim Bronder	
2.0	Oct. 21/2010	Sue Girimond	
2.0	Oct. 26/2010	Włodzimierz Łukasik	
2.0	Oct. 26/2010	Piotr Kubiesa	
2.0	Oct. 29/2010	Anicenta Bubak	



BRIDGE

Table of Contents

TABLE OF CONTENTS	3
1. INTRODUCTION	4
1.1 <i>Purpose of the document</i>	4
1.2 <i>Document Structure</i>	4
1.3 <i>Definitions and Acronyms</i>	4
1.4 <i>Document References</i>	5
1.5 <i>Project Overview</i>	6
2. GIS DATA, MAPS AND INDICATORS IN URBAN PLANNING	7
2.1 <i>GIS data and maps in urban planning</i>	7
2.2 <i>Sustainable development indicators in urban planning</i>	8
3. GIS DATA, MAPS AND INDICATORS FOR THE FIVE BRIDGE CASE STUDIES	9
3.1 <i>Helsinki</i>	9
3.2 <i>Athens</i>	12
3.3 <i>London</i>	16
3.4 <i>Firenze</i>	20
3.5 <i>Gliwice</i>	27



BRIDGE

GIS data and maps on spatial, socio-economic development and impact indicators

Deliverable no.:	D.3.3.2
Contract no.:	211345
Document Ref.:	211345_008_TR_IETU
Issue:	1.0
Date:	30/11/2010
Page number:	4/39

1. Introduction

1.1 Purpose of the document

This document is the D.3.3.1 GIS data and maps on spatial, socio-economic development and impact indicators. The **aim of this document** is data collecting concerning space, mobility, heating and cooling demand, land use, type coverage and intensity, land prices, building volumes, socio-economic status, quantitative and qualitative indicators, population density, unemployment rate, education level.

The subset of first products of Task 3.3, are organised in GIS. Data collected so far in the case studies are available for use of the other WPs. Contact details or info for download are reported in the next sections.

1.2 Document Structure

Chapter 1 is the introduction of the document (current chapter) which includes: the purpose of the document, the document's organization, the list of definitions and acronyms used in this document, the list of applicable and referenced documents and the BRIDGE project overview.

Chapter 2 describes GIS data, maps and indicators in urban planning.

Chapter 3 specifies the GIS data, maps and indicators for the five BRIDGE case studies.

1.3 Definitions and Acronyms

Definitions

- *Improve mobility*: improve road infrastructure; minimize through-traffic in the city centre; reduce private-car dependency; improve public transport (i.e. railway); and provide alternative means (e.g. cycle-ways).
- *Improve air quality*: minimize emissions to comply with air quality standards, particularly for dust (PM₁₀ and PM_{2.5}) and CO₂.
- *Improve energy efficiency*: and reduce consumption; improve insulation in old buildings (to minimize energy loss); improve insulation in the central heating infrastructure (i.e. pre-insulated pipes; and extend urban central heating and gas piping systems (to cater for detached houses and blocks of flats).
- *Controlled expansion of urban areas*: through local land use plans; provide better access to the city centre; improvement of local services; diversify the city centre functions; and enhancement of the public open space.
- *Improve water management*: through water permission requests for sustainable water use; maintain and improve the water quality; identify investments/projects that have the potential to negatively impact on water resources; and control development on floodplains/flooding areas.
- *Optimize energy consumption*: save energy and increase use of renewable energy sources.
- *Protect the water balance*: manage storm water to minimize flooding and to avoid water pollution through untreated surface runoff.
- *Enhance human well-being in the city*: improve attractiveness of housing, promote a spatial balance, and improve the public transport system.



BRIDGE

GIS data and maps on spatial, socio-economic development and impact indicators

Deliverable no.:	D.3.3.2
Contract no.:	211345
Document Ref.:	211345_008_TR_IETU
Issue:	1.0
Date:	30/11/2010
Page number:	5/39

Acronyms

CoP	Community of Practice
DSS	Decision Support System
GIS	Geographic Information System
SD	Sustainable Development
CoP	Community of Practice
n/a	not available

1.4 Document References

- [R1] European Spatial Development Perspective adopted by the Ministers for Spatial Planning at the Potsdam Council on 10 and 11 May 1999
- [R2] Indicators of sustainable development, edited by T. Borys, Environmental and Resources Economists Publisher, Białystok 2005.
- [R3] The National Environmental Policy for 2009 – 2012 and Its 2016. http://www.mos.gov.pl/kategoria/1979_environmental_policy/
- [R4] Quality of life on local level. An indicators-based study, edited by T. Borys, P. Rogala T. Brzozowski, M. Kusterka, T. Rycharski, United Nations Development Programme, Warszawa 2008.
- [R5] Poland 2025. Long-term strategy of sustainable development. Warszawa 2000.
- [R6] Environmental indicators, edited by T. Borys, Environmental and Resources Economists Publisher, Białystok 1999.
- [R7] Sustainable development-programme for tomorrow, S. Kozłowski, Abrys Publisher, Poznań – Warszawa 2008.
- [R8] Theory and practice of sustainable development, edited by A. Graczyk, EkoPress Publisher, Białystok-Wrocław 2007.



BRIDGE

GIS data and maps on spatial, socio-economic development and impact indicators

Deliverable no.:	D.3.3.2
Contract no.:	211345
Document Ref.:	211345_008_TR_IETU
Issue:	1.0
Date:	30/11/2010
Page number:	6/39

1.5 Project Overview

Urban metabolism considers a city as a system and distinguishes between energy and material flows. “Metabolic” studies are usually top-down approaches that assess the inputs and outputs of food, water, energy, etc. from a city, or that compare the metabolic process of several cities. In contrast, bottom-up approaches are based on quantitative estimates of urban metabolism components at local scale, considering the urban metabolism as the 3D exchange and transformation of energy and matter between a city and its environment. Recent advances in bio-physical sciences have led to new methods to estimate energy, water, carbon and pollutants fluxes. However, there is poor communication of new knowledge to end-users, such as planners, architects and engineers.

BRIDGE aims at illustrating the advantages of considering environmental issues in urban planning. BRIDGE will not perform a complete life cycle analysis or whole system urban metabolism, but rather focuses on specific metabolism components (energy, water, carbon, pollutants). BRIDGE’s main goal is to develop a Decision Support System (DSS) which has the potential to propose modifications on the metabolism of urban systems towards sustainability.

BRIDGE is a joint effort of 14 Organizations from 11 EU countries. Helsinki, Athens, London, Firenze and Gliwice have been selected as case study cities. The project uses a “Community of Practice” approach, which means that local stakeholders and scientists of the BRIDGE meet on a regular basis to learn from each other. The end-users are therefore involved in the project from the beginning. The energy and water fluxes are measured and modelled at local scale. The fluxes of carbon and pollutants are modelled and their spatio-temporal distributions are estimated. These fluxes are simulated in a 3D context and also dynamically by using state-of-the-art numerical models, which normally simulate the complexity of the urban dynamical process exploiting the power and capabilities of modern computer platforms. The output of the above models lead to indicators which define the state of the urban environment. The end-users decide on the objectives that correspond to their needs and determine objectives’ relative importance. Once the objectives have been determined, a set of associated criteria are developed to link the objectives with the indicators. BRIDGE integrate key environmental and socio-economic considerations into urban planning through Strategic Environmental Assessment. The BRIDGE DSS evaluates how planning alternatives can modify the physical flows of the above urban metabolism components. A Multi-criteria Decision Making approach has been adopted in BRIDGE DSS. To cope with the complexity of urban metabolism issues, the objectives measure the intensity of the interactions among the different elements in the system and its environment. The objectives are related to the fluxes of energy, water, carbon and pollutants in the case studies. The evaluation of the performance of each alternative is done in accordance with the developed scales for each criterion to measure the performance of individual alternatives.

Several studies have addressed urban metabolism issues, but few have integrated the development of numerical tools and methodologies for the analysis of fluxes between a city and its environment with its validation and application in terms of future development alternatives, based on environmental and socio-economic indicators for baseline and extreme situations. The innovation of BRIDGE lies in the development of a DSS integrating the bio-physical observations with socio-economic issues. It allows end-users to evaluate several urban planning alternatives based on their initial identification of planning objectives. In this way, sustainable planning strategies will be proposed based on quantitative assessments of energy, water, carbon and pollutants fluxes.



BRIDGE

GIS data and maps on spatial, socio-economic development and impact indicators

Deliverable no.:	D.3.3.2
Contract no.:	211345
Document Ref.:	211345_008_TR_IETU
Issue:	1.0
Date:	30/11/2010
Page number:	7/39

2. GIS data, maps and indicators in urban planning

2.1 GIS data and maps in urban planning

Within the frame of BRIDGE project GIS plays pivotal role. Primarily it is planned to employ GIS as a frame (or environment) for Decision Support System. In that system the role of GIS is integration and analysis of various datasets concerning specific area of interest and supplying the system in appropriate criteria values. GIS is planned to be used as a tool for data preparation for different models and for calculations of specific indexes. Eventually results of spatial analyses will be visualised by use of that technology.

Within the frame of the BRIDGE project specific modules are to be developed to facilitate a seamless communication between GIS and applied models.

GIS is also a communication platform for exchanging between scientists, local authorities and other stakeholders (general public).

The Town councils have following assignments: (a) management of municipal spatial policy; (b) land use planning; (c) creations of Master Development and Town Planning Scheme; (d) issuing of decisions concerning building development and land use. Town council activities concerning above mentioned assignments are supported by GIS.

Specifically GIS is used for optimisation of the spatial and resource as well as facilitation urban planning and decision making process. Specifically GIS is typically used for: (a) development of spatial database and elaboration of digital maps, which leads to facilitation of planning, updating tasks and work with use of interactive spatial database; (b) monitoring of urban planning completion; (c) facilitating of participation of stakeholders (local residents) in decision making process and so on.

To integrate natural elements and cycles into the urban tissue spatial urban planning goes beyond traditional land use planning to bring together and integrate policies and strategies. The outcome of spatial planning should support the expected developing objectives. The spatial planning should also guarantee that the solution is accepted by local society since they have to use the land. All these aforesaid aspect should be linked with GIS instruments. GIS supports planning and the public participation process with planning support systems. The key functions of GIS within spatial planning system could be divided into following aspects: Strategic and Operational (National and regional planning); Management (land use plans); Monitoring (administrative decision) and Communication (public information and promotion). Advances in GIS and supporting technologies have led to the development of decision support systems that facilitate the community planning process. Planning support systems can measure and compare performances of different planning scenarios, so effective use of GIS is crucial for the quality of proposed solutions. According to the ESDP the most important principle from the environmental point of view is the introducing of the ecosystems approach underlining the city as a complex system which is characterized by flows as continuous processes of change and development [R1].



BRIDGE

GIS data and maps on spatial, socio-economic development and impact indicators

Deliverable no.:	D.3.3.2
Contract no.:	211345
Document Ref.:	211345_008_TR_IETU
Issue:	1.0
Date:	30/11/2010
Page number:	8/39

2.2 Sustainable development indicators in urban planning

In the first stage of the project there were analyzed the available literature on sustainable development indicators [R2, R3, R4, R5, R6, R7, R8]. It was found about 556 indicators connected with environmental aspects of SD, 246 indicators connected with economic aspects of SD and 276 indicators connected with social aspects of SD. On the strength of this list and IETU's team experience there were chosen indicators suitable for the BRIDGE project. There were also checked the available indicators datasets that are based on the general statistic on the town Gliwice level (The Regional Statistical Office).

There were analyzed in details components connected with urban environments – three written in BRIDGE – energy, water and air quality (pollutants) and also others: mobility, land cover, greenery, infrastructures, economy, environmental management, population, social issues, sustainability. Basing on our experience and available literature we chose the indicators that best fit above mentioned components and that are connected with urban development. These indicators are objective statistical indicators (so-called hard indicators). The majority of them create indirect picture of objective quality of life in a city.

In the next stage of the project, after all the CoP Meetings will have taken place, it will be necessary to select relevant indicators capable of assessing them in a quantitative way in each of the case studies. The selection procedure will help to identify indicators that are both meaningful (capable of describing a particular aspect of sustainability) and measurable. Further determinants will be the modeling requirements and the specific data constraints. The selection of the indicators shall largely benefit from the input of the potential actors involved in the early stages of the project (i.e. members of the CoP).

One of the basic goals of indicators developed in the BRIDGE project is to show the progress of each city in the path of sustainable urban development. Indicators are to show the existing problems that are still to overcome. The criteria considered in the process of indicators' selection are as follows:

- assessment of indicators' availability/accessibility on a local level (the level of a city),
- simplicity of the indicators and easiness of its interpretation,
- significance for CoP members, BRIDGE researches,
- significance for quality of life: indicator should enable to find out whether quality of life in a city has increased/decreased,
- clearness and easiness to be accepted by CoP members,
- easiness of presentation chosen indicators in local media as instruments of monitoring development processes of the city and assessing the sustainable urban development.

There is no one universal list of local sustainable development indicators. These lists can differ for different cities. In BRIDGE proposed list of indicators will be confronted with the real needs of local communities during the process of CoP meetings (there are some questions in the BRIDGE CoP



3. GIS data, maps and indicators for the five BRIDGE case studies

3.1 Helsinki

3.1.1 Collected data

Data from 2008 except unemployment (2006), income level (2006) and car ownership (2007)

Study area (SA)

Major districts 1 and 3, district 501 and subdistrict 285

Comparison area (CA)

Table 1. Population Distribution.

Population	SA total	SA %	CA total	CA %
under 19 years	24260	12,4770491	101327	17,82259894
19-64 years	143388	73,7452234	386523	67,98626636
over 64 years	26789	13,7777275	80681	14,1911347
total	194437		568531	
	SA		CA	
Average household size	1,66		1,85	

Table 2. Education.

Education level (population over 14 years)	SA total	SA %	CA total	CA %
only compulsory education	44656	25,4673617	159130	32,44591159
upper secondary education	64016	36,5083891	166237	33,89499783
lower academic degree	34254	19,5350906	94469	19,26181626
higher academic degree	32420	18,4891586	70611	14,39727432
total	175346		490447	

Table 3. Income level/ Unemployment.

	SA, euros	CA, euros
Income level (2006)	30234	24190
	SA %	CA %
Unemployment (2006)	6,6	7,8
	SA, euros	CA, euros
Average price of old dwellings (flats)	3976	3331



BRIDGE

GIS data and maps on spatial, socio-economic development and impact indicators

Deliverable no.: D.3.3.2
 Contract no.: 211345
 Document Ref.: 211345_008_TR_IETU
 Issue: 1.0
 Date: 30/11/2010
 Page number: 10/39

Table 4. Migration.

Migration	SA total
in migration from other districts in Helsinki	16399
out migration to other districts in Helsinki	17213
net migration (internal balance, Helsinki)	-814
in migration from other municipalities and abroad	16248
out migration to other municipalities and abroad	12633
net migration	3615
total migration	2801

Table 5. Other.

	SA	CA
Construction density (building sqm/land area sqm)	0,47	0,23
	SA, %	CA, %
Car ownership (2007) (% of households, company cars excluded)	38,1	45,5

In August-September 2009 UHEL produced a sample data set. In the sample data set the following socio-economic data was collected (data from 2008 except unemployment (2006), income level (2006) and car ownership (2007)):

- Land use classification SLICES, map of Helsinki and legend of the map. Raster image in 10 m x 10 m pixels, coordinate system EUREF-FIN/TM35FIN = ETRS89, Transverse Mercator, Zone 35.
- Excel table on indicators regarding the selected city districts (major districts 1 and 3, district 501 and sub-district 285 put together (= Study Area) and Helsinki as a whole (= Comparison Area): population, average household size, education level, income level, unemployment, average price of old dwellings (flats), several migration figures, construction density, and car ownership. The Study Area covered for instance the Kumpula and Viikki measurement sites as well as the coming sites of run-off water measures (i.e. the sites of WP 3.1 measurements).

This data was delivered to the WP3 responsible persons as well as to the DSS developers



BRIDGE

GIS data and maps on spatial, socio-economic development and impact indicators

Deliverable no.:	D.3.3.2
Contract no.:	211345
Document Ref.:	211345_008_TR_IETU
Issue:	1.0
Date:	30/11/2010
Page number:	11/39

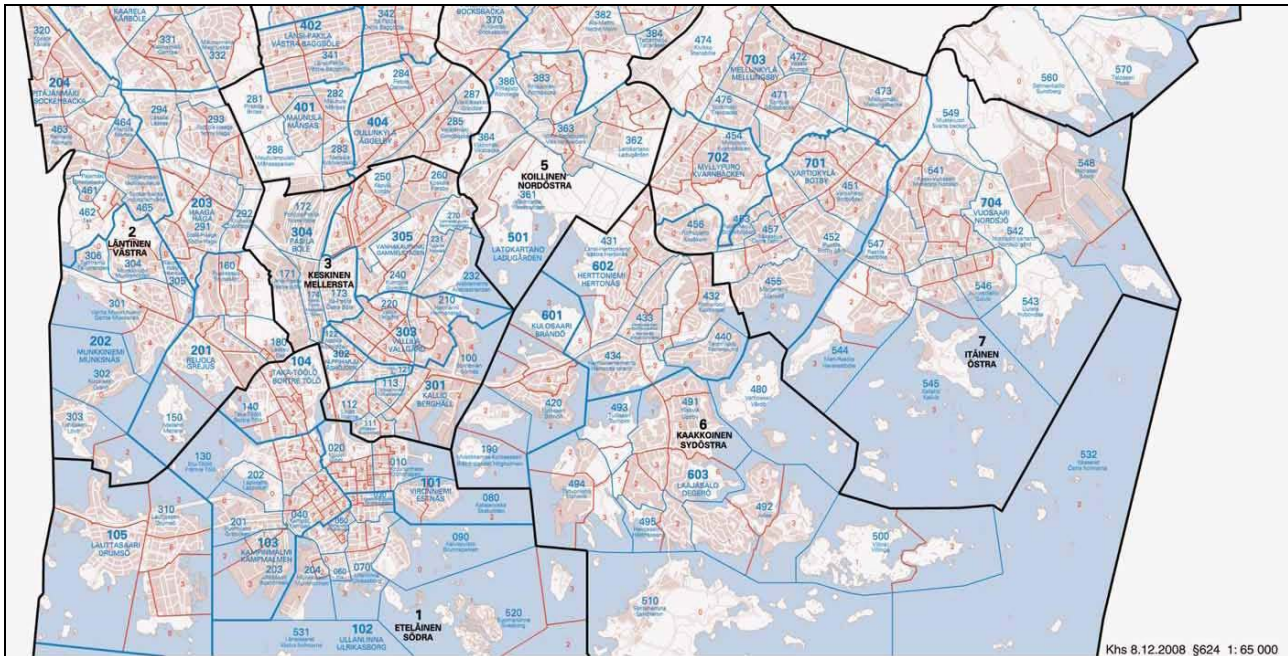


Figure 1. Map: Socio-economic data sample area Helsinki - the Kumpula and Viikki measurement sites

3.1.2 Quantitative and qualitative indicators:

In October 2009, UHEL provided a refined excel data set where data was divided into four levels. As new levels to the sample data set are the Meri-Rastila area (sub-district 544) which has been selected as the DSS test planning case (ref. CoP kick-off meeting 15.6.09), and the major district 7 which is the larger unit around Meri-Rastila:

Study area 1: Major districts 1 and 3, district 501 and sub-district 285 (same as above bullet point 2)

Study area 2: Major district 7

Study area 2a: Sub-district 544 (part of the major district 7), Meri-Rastila DSS test case area

Comparison area: Helsinki

Some of the indicators (construction density and car ownership) will be updated in week 43.

This data was/is delivered to the DSS developers

3.1.3 GIS data:

In October 2009, UHEL also delivered AutoCad files regarding the planning alternatives of the Meri-Rastila DSS area. The data was provided by the subcontractor, the City Planning Department of the city of Helsinki. This data will be utilised in the modelling and DSS development. The data is stored in the BRIDGE ftp server.



BRIDGE

GIS data and maps on spatial, socio-economic development and impact indicators

Deliverable no.:	D.3.3.2
Contract no.:	211345
Document Ref.:	211345_008_TR_IETU
Issue:	1.0
Date:	30/11/2010
Page number:	12/39

3.1.4 Other spatial data:

The UHEL WP3.3 team and the subcontractor will also deliver a broad GIS format data set in October/November for the DSS developers.

3.1.5 Contact info:

Hanna Ristisuo, MSc, hanna.ristisuo@helsinki.fi

3.2 Athens

The Athens Case Study is focused on the municipality of Egaleo, which lies in the western part of the Athens basin.

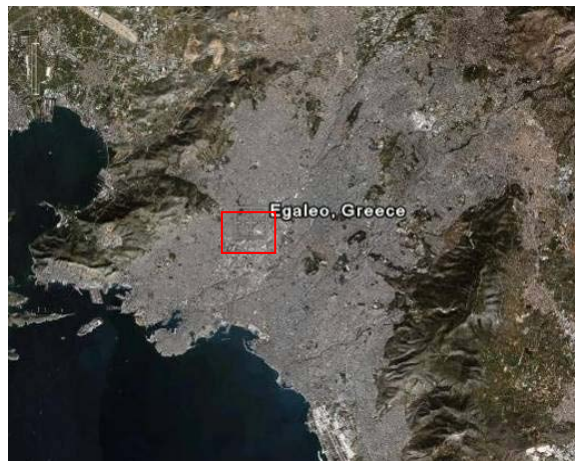


Figure 2. The Athens Case Study

The following data have been collected and are available in the **BRIDGE ftp server**. Municipality of Egaleo

- National Statistical Service in Greece
- National and Kapodistrian University of Athens (NKUA)

3.2.1 Collected data:

Not described within reporting period.

3.2.2 Quantitative and qualitative indicators:

Not gathered within reporting period.

3.2.3 GIS data:

Topography



BRIDGE

GIS data and maps on spatial, socio-economic development and impact indicators

Deliverable no.:	D.3.3.2
Contract no.:	211345
Document Ref.:	211345_008_TR_IETU
Issue:	1.0
Date:	30/11/2010
Page number:	13/39

The file is called topo.shp and provides topography information for the municipality of Egaleo in a shapefile format.

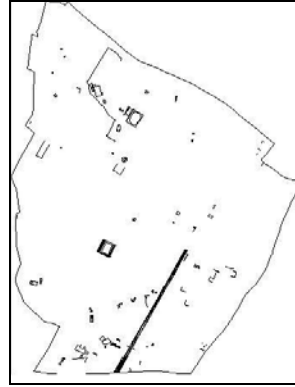


Figure 3. Topography of Egaleo

Building blocks

The file is called block.shp and it is a vector map of the building blocks of the municipality of Egaleo. The code number of each block as used by the National Statistical Service (ESYE) is given in the attribute table.



Figure 4. Building blocks of Egaleo

Buildings

The file is called build.shp and it provides information about the number of buildings included in each building block of the municipality of Egaleo. Each building in a block is numbered, for example building no1, building no2 etc. Therefore, in the attribute table, the column “ESYE CODE” gives the code of the block and the column “COUNT” gives the building number. The total number



BRIDGE

GIS data and maps on spatial, socio-economic development and impact indicators

Deliverable no.:	D.3.3.2
Contract no.:	211345
Document Ref.:	211345_008_TR_IETU
Issue:	1.0
Date:	30/11/2010
Page number:	14/39

of buildings included into a block results from the number that a specific code appears in the “ESYE CODE” list.



Figure 5. Buildings within blocks for Egaleo

Road network

The file called axon.shp provides the road network of the municipality of Egaleo.



Figure 6. Road network of Egaleo



BRIDGE

GIS data and maps on spatial, socio-economic development and impact indicators

Deliverable no.: D.3.3.2
Contract no.: 211345
Document Ref.: 211345_008_TR_IETU
Issue: 1.0
Date: 30/11/2010
Page number: 15/39

Transportation

- Bus stops
- Bus routes

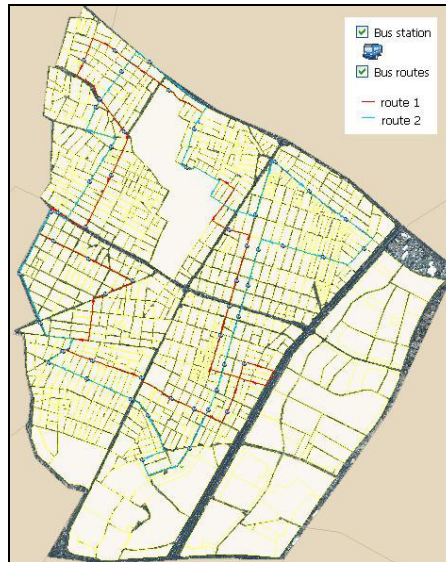


Figure 7. Transportation facilities in Egaleo

Landscape

- Land use
- Urban planning zones

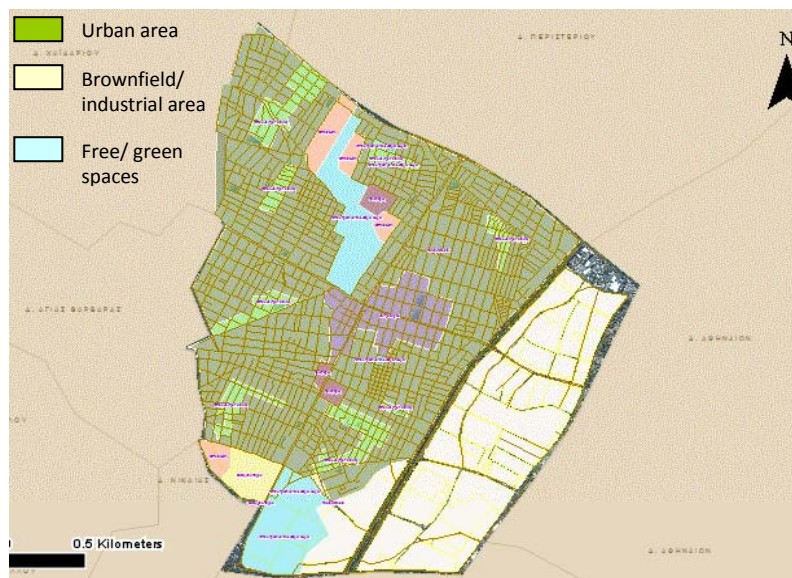


Figure 8. Urban use zone map of Egaleo



BRIDGE

GIS data and maps on spatial, socio-economic development and impact indicators

Deliverable no.:	D.3.3.2
Contract no.:	211345
Document Ref.:	211345_008_TR_IETU
Issue:	1.0
Date:	30/11/2010
Page number:	16/39

3.2.4 Other spatial data:

Population (2001 census data)

- Population per block [these data are provided by the Greek National Statistical Service in excel format].

Social features per block

- Points of interests
- Healthcare
- Churches
- Educational and Sport Units
- Squares

Economic data per block

- Objective value zones

Buildings per block (2000 census data)

These data are provided by the Greek National Statistical Service in excel format.

- Number of buildings
- Buildings by number of floors
- Buildings by construction period

3.2.5 Contact info:

Dr. Afroditi Synnefa (asynnefa@phys.uoa.gr)

Building Physicist, Group Building Environmental Studies

Physics Department, University of Athens

Tel.: +30-210-7257 533.

Stathopoulou Marina (mstathop@phys.uoa.gr)

Research Assistant, Remote Sensing and Image Processing Laboratory,

Department of Physics, University of Athens.

Tel.: +30-210-7276843

3.3 London

3.3.1 Collected data:

The target area of interest is the Central Activity Zone (GIS boundary files are on the BRIDGE FTP site).

Figure 3.3.1 Central Activity Zone (CAZ) in London: main case study area of London.



BRIDGE

GIS data and maps on spatial, socio-economic development and impact indicators

Deliverable no.: D.3.3.2
Contract no.: 211345
Document Ref.: 211345_008_TR_IETU
Issue: 1.0
Date: 30/11/2010
Page number: 17/39

Using a variety of data sources KCL is attempting to determine where the vegetation is located in London. From this we can then determine where additional vegetation can be located. Figure 3.3.2 shows the location of the building and the vegetation. In this case there is Lidar data available for determining the vegetation characteristics but this is unfortunately limited in comparison to most of the CAZ.

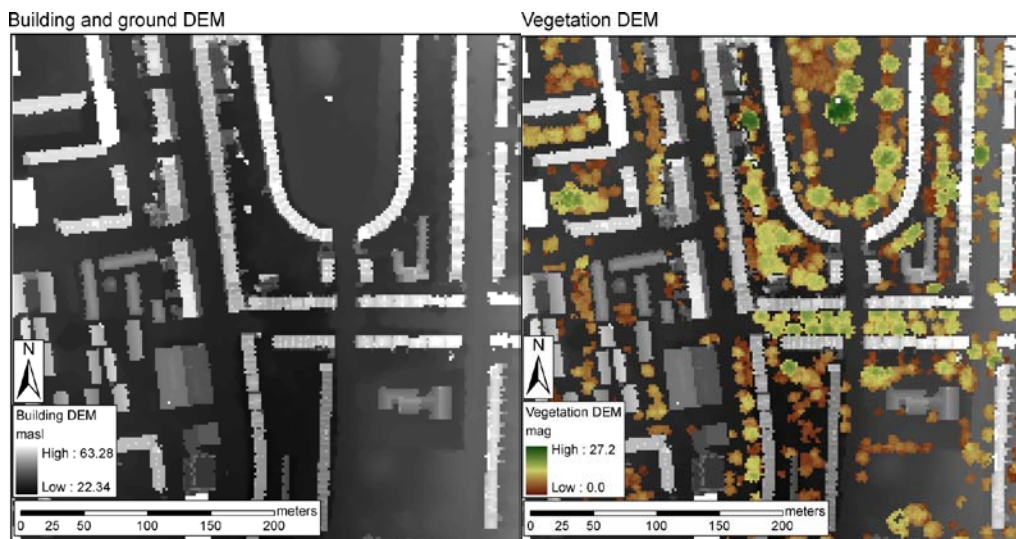


Figure 9. London building and vegetation digital elevation model (DEM).¹

3.3.2 Quantitative and qualitative indicators:

Data can be downloaded from the following sites:

<http://www.london.gov.uk/gla/publications/factsandfigures/factsfigures/population.jsp>

<http://www.gos.gov.uk/facts/factgol/London/>

<http://www.go-london.gov.uk/SourceDatasets/HTMIndex.htm>

<http://www.visionofbritain.org.uk/census/index.jsp>

<http://www.ons.gov.uk/census/index.html>

3.3.3 GIS data:

3D data set: Available from Greater London Authority after signing a legal agreement

SOTON GIS data

1 : 200 000 scale vector boundary data maps of Great Britain used to define urban features and London borough boundaries.

¹ Lindberg F & CSB Grimmond The influence of vegetation and building morphology on shadow patterns and mean radiant temperatures in urban areas: London case study *Urban Ecosystems (submitted)*



BRIDGE

GIS data and maps on spatial, socio-economic development and impact indicators

Deliverable no.:	D.3.3.2
Contract no.:	211345
Document Ref.:	211345_008_TR_IETU
Issue:	1.0
Date:	30/11/2010
Page number:	18/39

The London Atmospheric Emissions Inventory (LAEI) for 2006 and forward projections (2015). This includes both the 25 m PM₁₀ concentration map ($\mu\text{g m}^{-3}$) and the total emission predictions for London (tonnes) for each borough and emission sources (1 km grid squares).

A 25 m² resolution land classification map of the UK (LCM2000, Centre of Ecology and Hydrology, UK)

3.3.4 Other spatial data:

Airborne acquired images

KCL: Airborne (one daytime, one night time flight in August 2008), north/south transects of Greater London:

- hyperspectral radiances measured by NERC ARSF EAGLE/HAWK sensors, broadband radiances measured by NERC ARSF ATM (Spectral bands from 400 up to 2500 nm)
- Leica ALS50-II LiDAR
- Leica RCD105 39 megapixel digital camera

KCL: Airborne data collected June 2010 (one day time and one night flight) by NERC ARSF:

- hyperspectral radiances measured by Aisa EAGLE and HAWK sensors
- thermal radiances measured by Itres TABI
- Leica ALS50-II LiDAR
- Leica RCD105 39 megapixel digital camera
- Accompanied by ground based measurements e.g.
- thermal imagers: FLIR SC640, MIRICLE K370, TESTO
- surface spectrometers: GER1500, ASD Fieldspec3

SOTON GIS data

Urban vegetation data for the Greater London Authority (GLA) has been extracted at each of the 33 London borough levels using ArcMap™ (ESRI® ArcMap™ version 9.3). The habitat classes extracted are: Class (1) Broad leaved trees, Class (2) Coniferous trees and Classes (5-8) Grasses.

The raster data-sets (25 m) were used to quantify the area of these land cover classes for each London borough.

KCL GIS data

Morphological characteristics

- Roughness length for momentum
- Zero plane displacement length
- Plan area index
- Frontal area index
- Sky view factors

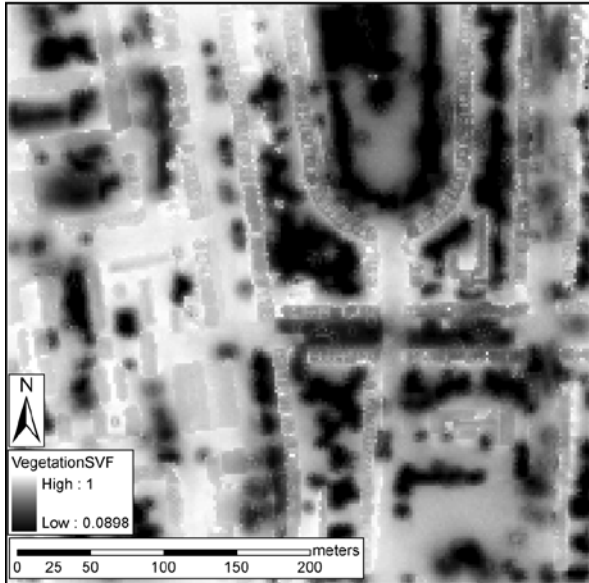


BRIDGE

GIS data and maps on spatial, socio-economic development and impact indicators

Deliverable no.: D.3.3.2
Contract no.: 211345
Document Ref.: 211345_008_TR_IETU
Issue: 1.0
Date: 30/11/2010
Page number: 19/39

Vegetation SVF



Building and Ground SVF

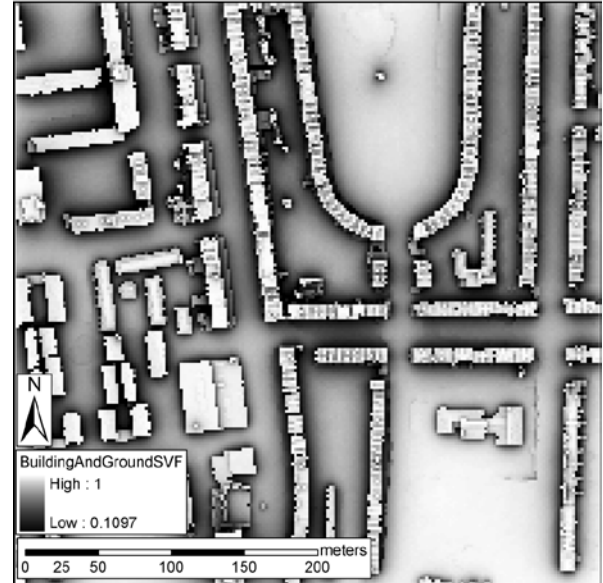


Figure 10. London building and vegetation simple vector format (SVF)

Anthropogenic heat flux

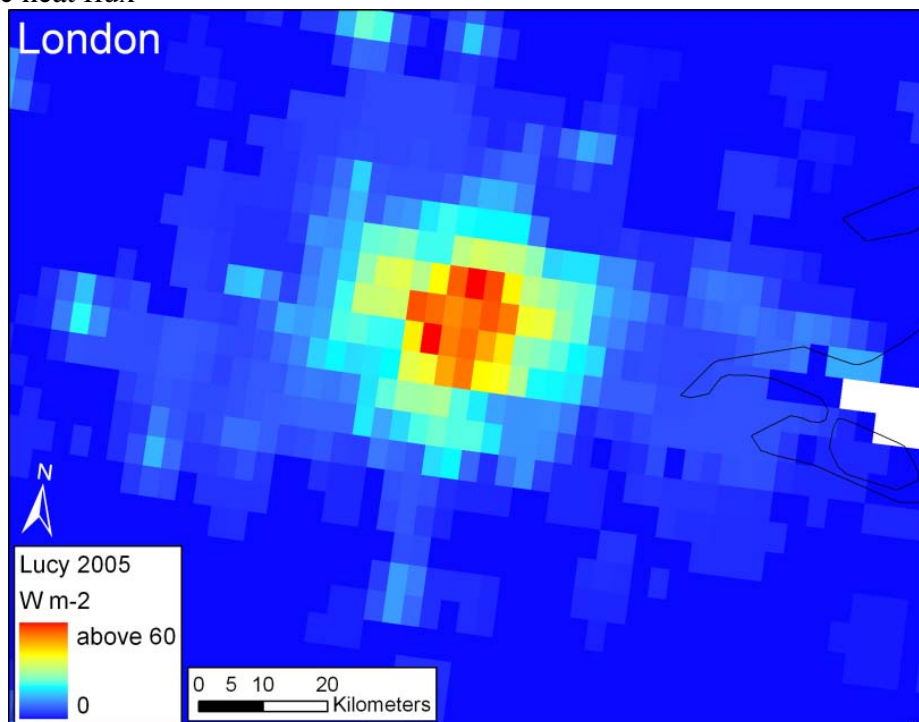


Figure 11. Anthropogenic Heat flux modeled for 2005 – the average for the year using the LUCY model (Allen et al. 2010¹)

¹ Allen L, F Lindberg, CSB Grimmond **Global to city scale model for anthropogenic heat flux**, International Journal of Climatology DOI: 10.1002/joc.2210; <http://onlinelibrary.wiley.com/doi/10.1002/joc.2210/pdf>



BRIDGE

GIS data and maps on spatial, socio-economic development and impact indicators

Deliverable no.: D.3.3.2
Contract no.: 211345
Document Ref.: 211345_008_TR_IETU
Issue: 1.0
Date: 30/11/2010
Page number: 20/39

3.3.5 Contact info:

KCL:

Prof. Sue Grimmond (sue.grimmond@kcl.ac.uk)

Dr Sean Beevers (sean.beevers@kcl.ac.uk)

SOTON:

Prof. Gail Taylor (G.Taylor@soton.ac.uk)

Dr. M J. Tallis (M.J.TALLIS@soton.ac.uk)

3.4 Firenze

3.4.1 Collected data:

The main source of the data are:

- Municipality of Firenze
- University of Firenze Department of agronomy and land management
- Tuscany Regional Agency for Environmental Protection (ARPAT)

3.4.2 Quantitative and qualitative indicators:

Population (2001-2007 census data) (see below 3.4.5 session)

Concentration of pollutants (PM10, CO₂, NO_x, SO_x, CO): Network of 5 air quality monitoring stations (2003 – present) (see below 3.4.5 session)

Traffic data : data are routinely collected at 15-min time intervals by optical systems measuring the number of passing vehicles at several locations (checkpoints) within the city center (Direzione Mobilita ` Comune di Firenze).

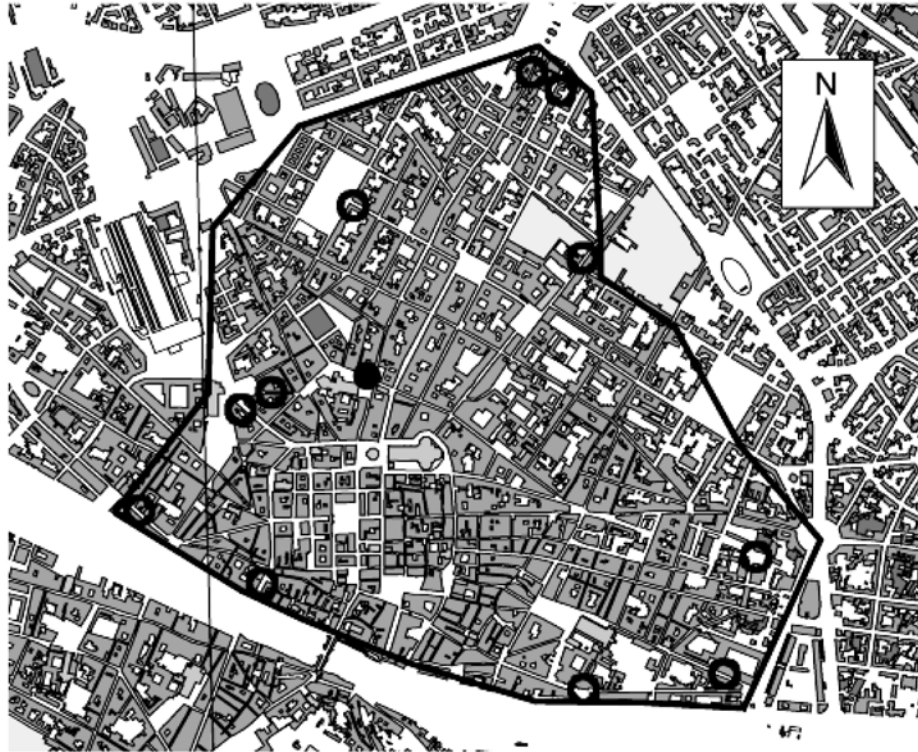


Figure 12. Map of the city center of Florence. The position of Osservatorio Ximeniano is indicated by a black filled circle and traffic checkpoints are indicated by open circles

3.4.3 GIS data:

Firenze GIS data are available in shapefile format, processed and identified as numeric code:

- **Road Networks**

- 101 Road
- 102 Unpaved road
- 103 Foot track / Mule track
- 104 Road under construction
- 105 Road disused
- 106 Traffic Island
- 107 Footpath access
- 108 Flyover / Bridge
- 109 Little bridge
- 110 Ford
- 111 Footbridge
- 112 Subway



BRIDGE

GIS data and maps on spatial, socio-economic development and impact indicators

Deliverable no.: D.3.3.2
Contract no.: 211345
Document Ref.: 211345_008_TR_IETU
Issue: 1.0
Date: 30/11/2010
Page number: 22/39

- 113 Wing wall
- 114 Tunnel
- 116 Boundary km stone
- 117 Diesel Railway
- 118 Electric Railway
- 119 Railway under construction
- 120 Railway disused
- 122 Level crossing
- 123 Mobile platform
- 126 Path
- 127 Runway
- 128 Beacon
- 129 Steps
- 130 Street Number

- **Building and other structure**

- 201 Civil/administrative building
- 202 Industrial/commercial building
- 203 Place of worship
- 204 Building under construction
- 205 Needs rebuilding
- 206 Loggia
- 207 Newsstand
- 208 Skylight
- 209 Round top
- 210 Greenhouse
- 211 Bus/train station
- 212 Power/box station
- 213 Monument
- 214 Sports ground
- 215 Garden centre
- 216 Stalls
- 217 Chimney/Tower
- 218 Bin
- 219 Tabernacle
- 220 Flight of steps
- 221 Ramp
- 222 District
- 223 Hospital department
- 224 School building
- 225 Sport arena
- 226 Religious place
- 227 Compound
- 228 Cemetery



BRIDGE

GIS data and maps on spatial, socio-economic development and impact indicators

Deliverable no.: D.3.3.2
Contract no.: 211345
Document Ref.: 211345_008_TR_IETU
Issue: 1.0
Date: 30/11/2010
Page number: 23/39

- 229 Camping/Holiday camp
- 235 Basement
- 236 Building edge on the ground

- **Hydrography**

- 301 River/Canal
- 302 Waterway
- 303 Spillway
- 304 River island
- 306 Pond/Lagoon
- 307 Underground Waterworks
- 308 Waterworks
- 309 Water tank
- 310 Fountain/basin
- 311 Pool
- 312 Spring
- 313 Well
- 314 Water fall
- 315 Purifier
- 316 Underground waterway
- 319 Uncovered Pipe

- **Infrastructure**

- 401 Utility pole
- 402 Pylon
- 403 Electric line
- 404 Underground gas pipeline
- 405 Gas pipeline
- 407 Oil pipeline
- 409 Mine/Peat bog
- 410 Generating station
- 411 Petrol pump
- 412 Dumping
- 413 Junk yard

- **Divisor and ground element**

- 501 Partition wall
- 502 Enclosure/railings
- 503 Hedge
- 504 Dry laid wall
- 505 Walls/Bastion
- 506 Retaining structure (top)



BRIDGE

GIS data and maps on spatial, socio-economic development and impact indicators

Deliverable no.: D.3.3.2
Contract no.: 211345
Document Ref.: 211345_008_TR_IETU
Issue: 1.0
Date: 30/11/2010
Page number: 24/39

507 Retaining structure (foot)

- **Terrestrial build**

601 Escarpment/slope (top)
602 Escarpment/slope (foot)
603 Dyke (top)
604 Dyke (foot)
606 Rock

- **Vegetation**

701 Crop line
702 Tree line
703 Flowerbed
704 Isolated tree
705 Tree Row
706 Vine Row
707 Olive Row
708 Orchard Row
709 Garden/Park
710 Vegetable plot/Garden centre line
711 Vineyard line
712 Olive grove line
713 Orchard line
714 Scrub line
715 Fruit tree
716 Olive
717 Vine
718 Vegetable plot/Garden centre
719 Copse
720 Fir
721 Pine
722 Cypress
723 Oak
726 Larch
727 Poplar
729 Scrub

- **Orographic element**

801 Main line
802 Ordinary line
803 Auxiliary line
804 Height



BRIDGE

GIS data and maps on spatial, socio-economic development and impact indicators

Deliverable no.: D.3.3.2
Contract no.: 211345
Document Ref.: 211345_008_TR_IETU
Issue: 1.0
Date: 30/11/2010
Page number: 25/39

- **Administrative Limit**

- 901 Municipality line
- 905 Outstation line
- 906 Map making limit

- **Toponymy**

- 1001 ISTAT CENTRE (building)
- 1002 UNIT CENTRE (building)
- 1003 Scattered ISTAT (building)
- 1004 Road network/Railroad
- 1005 Church/Monument/Antiques
- 1006 Garden/Park/Estate
- 1007 Mountain
- 1008 Hill/Pass/Gorge
- 1009 Valley
- 1010 Water way
- 1011 Lake/Lagoon
- 1012 Hydrographic structure
- 1013 Main line value
- 1014 Height point value
- 1015 Point value
- 1016 Kilometric value

All GIS data are available for FTP download at:

<ftp://149.139.16.152>
[username: toscano](#)
[pwd: piero1980](#)



Figure 13. Road network of Firenze



BRIDGE

GIS data and maps on spatial, socio-economic development and impact indicators

Deliverable no.: D.3.3.2
Contract no.: 211345
Document Ref.: 211345_008_TR_IETU
Issue: 1.0
Date: 30/11/2010
Page number: 26/39



Figure 14. Buildings of Firenze



Figure 15. Land Use of Firenze

3.4.4 Other spatial data:

Orthophoto full coverage 2004 (0.5 m) / 2007 (0.15 m)

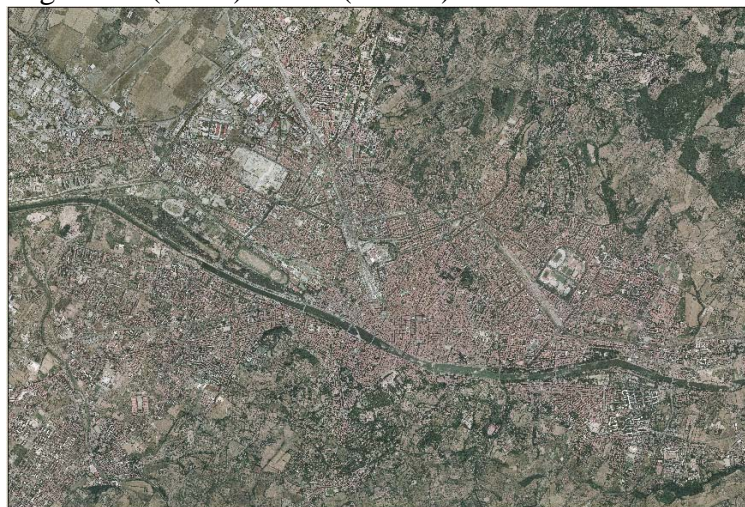


Figure 16. Firenze Image Mosaick



BRIDGE

GIS data and maps on spatial, socio-economic development and impact indicators

Deliverable no.: D.3.3.2
Contract no.: 211345
Document Ref.: 211345_008_TR_IETU
Issue: 1.0
Date: 30/11/2010
Page number: 27/39

Full coverage images are available on DVD-Rom

DEM (Digital Elevation Model) high resolution (10 m) digital elevation model is available

3.4.5 Other no spatial data:

Population (2001-2007 census data)

Concentration of pollutants (PM₁₀, CO₂, NO_x, SO_x, CO): Network of 5 air quality monitoring stations (2003 – present)

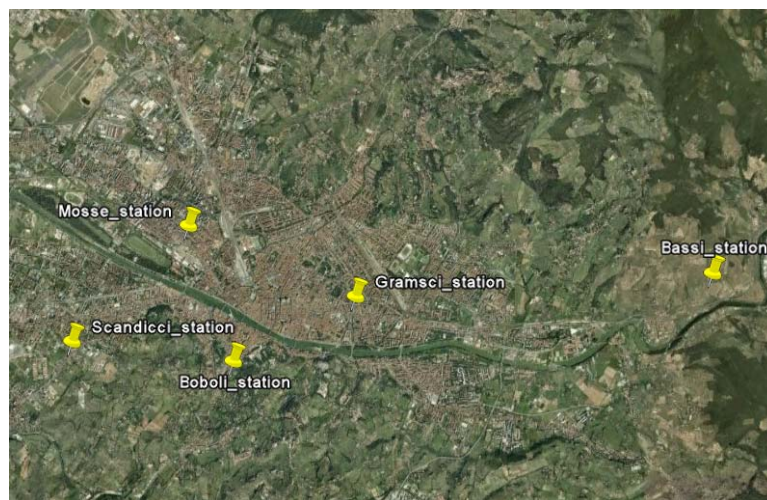


Figure 17. Air quality monitoring Network

Population data and air quality data are available for FTP download at:

<ftp://149.139.16.152>
[username: toscano](ftp://149.139.16.152)
[pwd: piero1980](ftp://149.139.16.152)

3.4.6 Contact info:

Piero Toscano, p.toscano@ibimet.cnr.it

3.5 Gliwice

In 2008 the total number of inhabitants amounted 191 232 and with decreasing tendency (100.149 woman and 91.083 man). Area of Gliwice is 133,9 km², what means that population density was 1.428 per km². Between 2006 and 2008 moderate increase of birth indicator were observed at low rate.

The number of people in working age in comparison to total number of inhabitants exceeded 25% in 2008. Mean salary amounted 3.146,53 PLZ in national economy in Gliwice (2933,32 PLZ in



BRIDGE

GIS data and maps on spatial, socio-economic development and impact indicators

Deliverable no.:	D.3.3.2
Contract no.:	211345
Document Ref.:	211345_008_TR_IETU
Issue:	1.0
Date:	30/11/2010
Page number:	28/39

Silesian Voivodeship and 2735,28 PLZ in Poland). The number of unemployment amounted 4249, including 467 people with university education.

In the end of 2008 there were in Gliwice:

- 53 existing land use plans,
- 8 land use plans within Strategic Impact Assessment procedure,
- 3 land use plans before Strategic Impact Assessment procedure.

3.5.1 Collected data:

Development of the BRIDGE database containing GIS system linked with database resources is one of the fundamental premises of DSS creation which uses spatial and statistical data for elaboration of variety of different indexes.

The main source of the data are:

- Gliwice Town Council
- Institute for Ecology of Industrial Areas (IETU)
- Central Statistical Office in Poland (PESEL database system)

Additional sources are:

- European Environment Agency (and others European Agencies) and
- Polish GEOPORTAL.

The Data from above mentioned sources differ in terms of spatial precision, availability, topicality and data format. It is planned that the main data provider will be Gliwice Town Council. Gliwice has developed Municipal Spatial Information System. Huge number of GIS coverages enclosed in that system are ones of high precision and are quite updated.

The other source of spatial data is IETU GIS. The coverages are ones of less precision usually appropriate for analyses made on province (Voivodeship) extent.

Central Statistical Office provides statistical/ census data on variety of subjects addressed on the whole town of Gliwice.

It is planned to use as an analytical platform ESRI software – ARC/GIS and ESRI shape as exchange format. The spatial data can be organised as distinct BRIDGE GIS geodatabase. Some data can be Gliwice Spatial Information System can be available via WMS platform.

As a spatial reference system WGS 1984 or ETRF are planned to be used in the BRIDGE project. For purpose of analyses other spatial reference system based on the two above mentioned geodetic systems.

Below in the table and on the cards have been attached meta information on the coverages from IETU and Gliwice Town Council.

The decision concerning selection of the specific spatial and statistical data is planned to be made during meeting in Gliwice in October 2009.



BRIDGE

3.5.2 GIS data and maps:

The case study in Gliwice will look at the effects of land use change on the parameters analysed by BRIDGE (i.e. air, water and energy). The Gliwice Town Development Plan is currently under consultation and, therefore, it is not a suitable case study. However, the town planner indicated that a number of areas will have more detailed planning (i.e. will be subject to local area planning). These areas include the Kopernika housing district and the Politechnika district.

It is possible to distinguish at least two spatial extents of GIS data. One contains the information on the whole town of Gliwice while the second one - very detailed information on the district (or so called geodetic extent) of “Politechnika”.

The spatial extents of the Politechnika district and Gliwice are presented in the table below.

Table 6. Extent of Politechnika district and Gliwice municipality

Coordinate Extent	Politechnika	Gliwice
Longitude West	18,667491	18,528678
Longitude East	18,693489	18,768640
Latitude North	50,295352	50,382402
Latitude South	50,279457	50,219751

Data prepared for the BRIDGE project, both vector and raster data, are stored in Polish Cartographic Reference System PUWG 1992. The table below contains the parameters of this system (Table 7).

Table 7. Parameters of the Polish State Geodetic Coordinate System 1992

Parameter	Value
Name	PUWG 92
Projection	Gauss Kruger
False Easting	500000
False Northing	-5300000
Central Meridian	19,000000
Scale Factor	0,999300
Latitude of origin	0,000000
Linear	Unit: Meter
Datum	D ETRF 1989

Source: ArcGIS

The thematic scope of the Gliwice GIS data depends strongly on requirements concerning design of the DSS system i.e. criteria and indexes and on data needs concerning modelling of different environmental phenomena, e.g. modelling of the air pollutants transport and dispersion. Because different modelling tools use different data and the “shape” of the DSS has not yet been specified, the GIS data are prepared in advance. The idea was to have something to be able to react on specific demands and eventually supply partners with the spatial data. To describe scope of data, - GIS data have been divided into six categories depending on the source of the data. These are:

- On-line data from Polish Geoportal or Gliwice ISDP WMS Server in WMS format. The table below contains the list of on-line spatial resources accessible in WMS format (Table 8).



BRIDGE

GIS data and maps on spatial, socio-economic development and impact indicators

Deliverable no.: D.3.3.2
 Contract no.: 211345
 Document Ref.: 211345_008_TR_IETU
 Issue: 1.0
 Date: 30/11/2010
 Page number: 30/39

- ❑ GIS data from European Environmental database including Corine Land Cover 2006 and Urban Atlas 2010.
- ❑ GIS free of charge GIS coverages (mainly in ESRI shape format) from IETU Spatial Information System.
- ❑ GIS free of charge GIS coverages from Gliwice Municipal Spatial Information System.
- ❑ Spatial, chargeable data from Department of Geodesy and Cartography of Gliwice City Hall and
- ❑ Spatial data from other sources (third parties, stakeholders, service providers, Polish Statistical Office, General Director for National Roads and Motorways)

Table 8. Web Map Service.

Subject / thematic scope	Link to the WMS data	Source
State Register on Boundaries	http://sdi.geoportal.gov.pl/wms_prg/wmservice.aspx	Polish Geoportal
St. Register on Geographical Names	http://sdi.geoportal.gov.pl/wms_prng/wmservice.aspx	Polish Geoportal
Polish Hydrographical Map	http://sdi.geoportal.gov.pl/wms_hydro/wmservice.aspx	Polish Geoportal
Polish Ecological Map	http://sdi.geoportal.gov.pl/wms_sozo/wmservice.aspx	Polish Geoportal
Topographical maps	http://sdi.geoportal.gov.pl/wms_topo/wmservice.aspx	Polish Geoportal
Aerial photo map (orthophotomap)	http://sdi.geoportal.gov.pl/wms_orto/wmservice.aspx	Polish Geoportal
Gliwice Land Information System ¹	http://test.um.gliwice.pl/portal/isdp/scripts/isdp.dll/wms?REQUEST=GetCapabilities&SERVICE=WMS&EX_PROFILE=plan12	Gliwice ISDP WMS Server

http address: <http://maps.geoportal.gov.pl/webclient/>

Table 9. IETU coverages.

Coverage Name	Field name	Field description
IETU_table	L_LUD_2001	Number of inhabitants in 500 metres grid (year 2001 – modelled)
	L_M_BEZ_OG	Number of flats heated by coal-fired boiler plant in 500 metres grid
	M_Z_IND_	Number of flats heated by coal-burning furnace in 500 metres grid
	PM10KG_TRA	Emission of PM10 from traffic in 500 metres grid in kilograms (emission from state, provincial, county and city roads. Local roads not included)
Gliwice_DEM	value	Digital elevation model in 10m grid (1700 columns x 1800 rows)
Gliwice_boundary		Polygon map of administrative boundaries of Gliwice town
Gliwice_extent		Polygon map representing extent of the Gliwice land use map and Gliwice DEM
Gliwice_landuse	Code, level 1, level 2, level 3	Land use / land cover map Corine Land Cover CLC
Gliwice_Politechnika		Polygon map, preliminary map of the boundaries of Politechnika district

Table 10. Gliwice City Hall coverages (in possession of Gliwice Municipality).

DEM	Digital elevation model in 1m grid
Boundary	boundaries of Gliwice town
Districts	boundaries of Gliwice districts
Roads	Axes of roads (road network)

¹ City boundaries, Local urban plans, address points, streets (lines), buildings, extents, plots, district boundaries, orthophotomap 2009



BRIDGE

GIS data and maps on spatial, socio-economic development and impact indicators

Deliverable no.:	D.3.3.2
Contract no.:	211345
Document Ref.:	211345_008_TR_IETU
Issue:	1.0
Date:	30/11/2010
Page number:	31/39

Polish Geodetic Service (representing Polish government) possesses the following coverages:

- Gliwice municipal boundaries
- Boundaries of Gliwice districts/ urban units
- Map of address points
- Map of buildings (including info on type of building and number of floors)
- Land use map
- networks of following facilities:
 - waterworks,
 - sewage system,
 - central heating system,
 - gas pipelines.

The Politechnika district presents the most suitable real life project to be assessed by BRIDGE, as a number of studies have already been undertaken and, consequently, relevant information for the area is available. The Land Use Plan for the Politechnika District will be probably changed according to BRIDGE DSS tool. A number of layout alternatives are being considered.

Area: 16,6 km²

Perimeter: 5640,5488 m



Figure 18. Plan of the Academic District in Gliwice

All planning documents including urban plans constitute data of high importance. At this moment local plans are being (some already have been) elaborated and consulted, so we should obtain them quite soon.

The City Hall in Gliwice runs Gliwice ISDP WMS Server and makes accessible both vector and raster data from Gliwice Municipal Spatial Information System. This data are free of charge (Figure 19). Free of charge GIS vector data from Gliwice Municipal Spatial Information System contain coverages of: administrative boundaries of Gliwice, boundaries of Gliwice districts and road axes.



BRIDGE

GIS data and maps on spatial, socio-economic development and impact indicators

Deliverable no.: D.3.3.2
Contract no.: 211345
Document Ref.: 211345_008_TR_IETU
Issue: 1.0
Date: 30/11/2010
Page number: 32/39

Free of charge GIS data from European Environmental Agency database are Corine Land Cover 2006 and Urban Atlas 2010. Just for comparison it is worth to mention that within Gliwice area (a little bit larger than Gliwice itself) the Corine Land Cover 2006 contains 199 polygons while the Urban Atlas 3417. Difference is like 17 to 1.

At the beginning of the BRIDGE project crucial role played spatial data from IETU. Among others there are: digital Elevation Model (10 metres grid) and the 500 metres square vector coverage containing, for each 500m square, data on modelled number of inhabitants in year 2001, number of flats heated by coal-fired boiler plant, number of flats heated by coal-burning furnace and; emission of PM10 from traffic in kilograms (emission from state, provincial, county and city roads. Local roads not included).

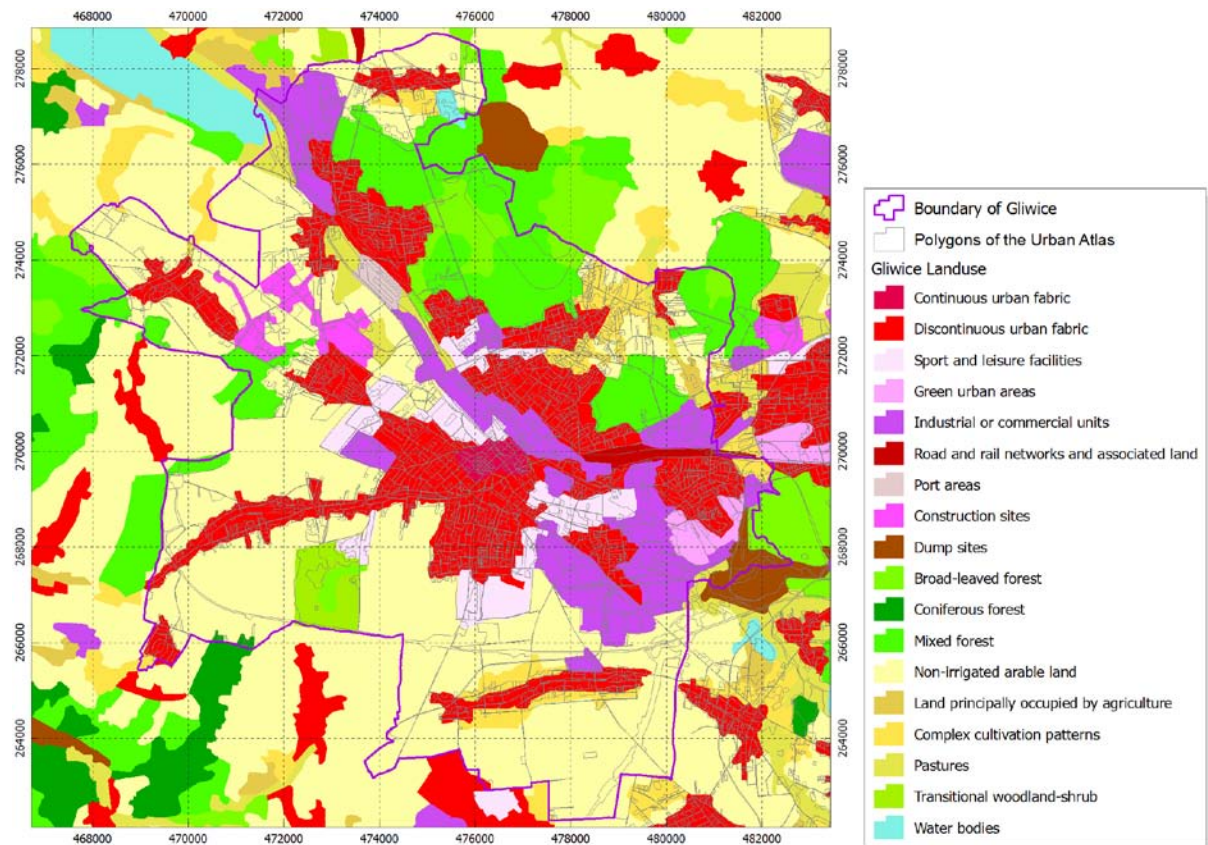


Figure 19. Classes of the Corine land cover map with lines of new polygons from the Urban Atlas 2010

After choosing the Politechnika¹ extent as the Gliwice study area, the spatial data from Department of Geodesy and Cartography of Gliwice City Hall have been ordered. These data are chargeable and are written in geodetic (digital) format not compatible with ArcGIS. As an export format DXF is used and such data have been purchased. Files in DXF format contain mainly geometric data without attribute (Figure 20). It was decided order and purchase following data, so called, overlays:

¹ According to previous evaluation the Academic district (Politechnika) presents the most suitable real life project to be assessed by BRIDGE, as a number of studies have already been undertaken and, consequently, relevant information for the area is available. The Land Use Plan for the Academic District will be probably changed according to BRIDGE DSS tool. A number of layout alternatives are being considered. Area: 16,6 km², Population in 2008 – 17 769.



BRIDGE

GIS data and maps on spatial, socio-economic development and impact indicators

Deliverable no.: D.3.3.2
 Contract no.: 211345
 Document Ref.: 211345_008_TR_IETU
 Issue: 1.0
 Date: 30/11/2010
 Page number: 33/39

- ❑ Geodetic overlay E – plot and buildings registers.
- ❑ Geodetic overlay U – linear facilities (electricity network, water pipeline network, central heating, gas).
- ❑ Geodetic overlay S – surface coverage (streets, hydrographical elements, population, etc).
- ❑ As an extra data : boundaries of the city districts and geodetic extents as well as address points.

This data have to be refined in terms of building spatial topology and adding and assigning attribute table (see results of attribute assignment to the cleaned building coverage - Table 11).

To shorten the time needed for refinement, third party has been involved to supply the GIS BRIDGE database with appropriate GIS data. Thus supplementary data on traffic, population, address points, population¹ have been obtained (Figure 21, Figure 23).

Information on buildings height is of great importance for the city planners. This information is not usually accessible in any data base systems. To overcome budget restraints the height of building within the Politechnika district the information have been calculated on the basis of available data. These included: main buildings function, number of floors and information on the height of selected buildings (Figure 21, Figure 22). Also information red from aerial photo on the length of the buildings shadows has been used. Thus we obtained rough estimation of the buildings height in the district of Politechnika (Figure 21).

Table 11. Structure of the building function in Politechnika district

Id	Main building function	Number	Area sum m ²	Area sum %	Floor sum
1	dwelling-house	215	48848	22,25	710
2	education, culture, religious cult	62	60040	27,35	153
3	industrial	28	20114	9,16	29
4	office	24	8848	4,03	56
5	other	326	44641	20,34	370
6	outbuildings, garage	108	1613	0,73	108
7	trade or service	50	13663	6,22	63
8	transport or communication	135	7742	3,53	135
9	warehouse or store	30	14001	6,38	33
	in total	978	219510	100,00	1657

¹ Population data contain: postal address, spatial coordinates, gender of an inhabitant and date of birth.

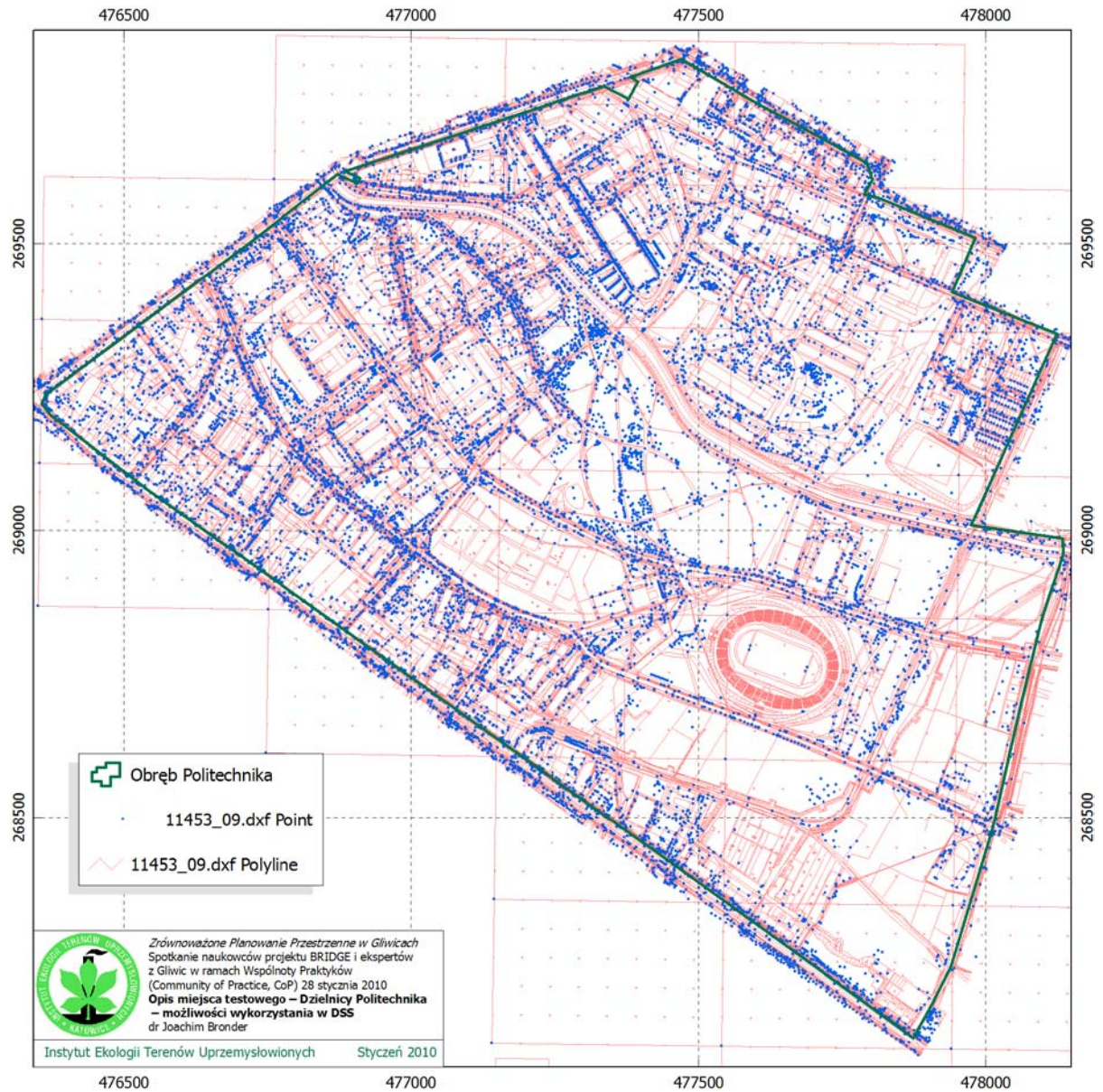


Figure 20. The point and line geometric entities of the DXF CAD drawing



Figure 21. Assessment of the buildings height



Figure 22. Three dimensional view of the buildings within Politechnika extent



BRIDGE

GIS data and maps on spatial, socio-economic development and impact indicators

Deliverable no.: D.3.3.2
 Contract no.: 211345
 Document Ref.: 211345_008_TR_IETU
 Issue: 1.0
 Date: 30/11/2010
 Page number: 36/39

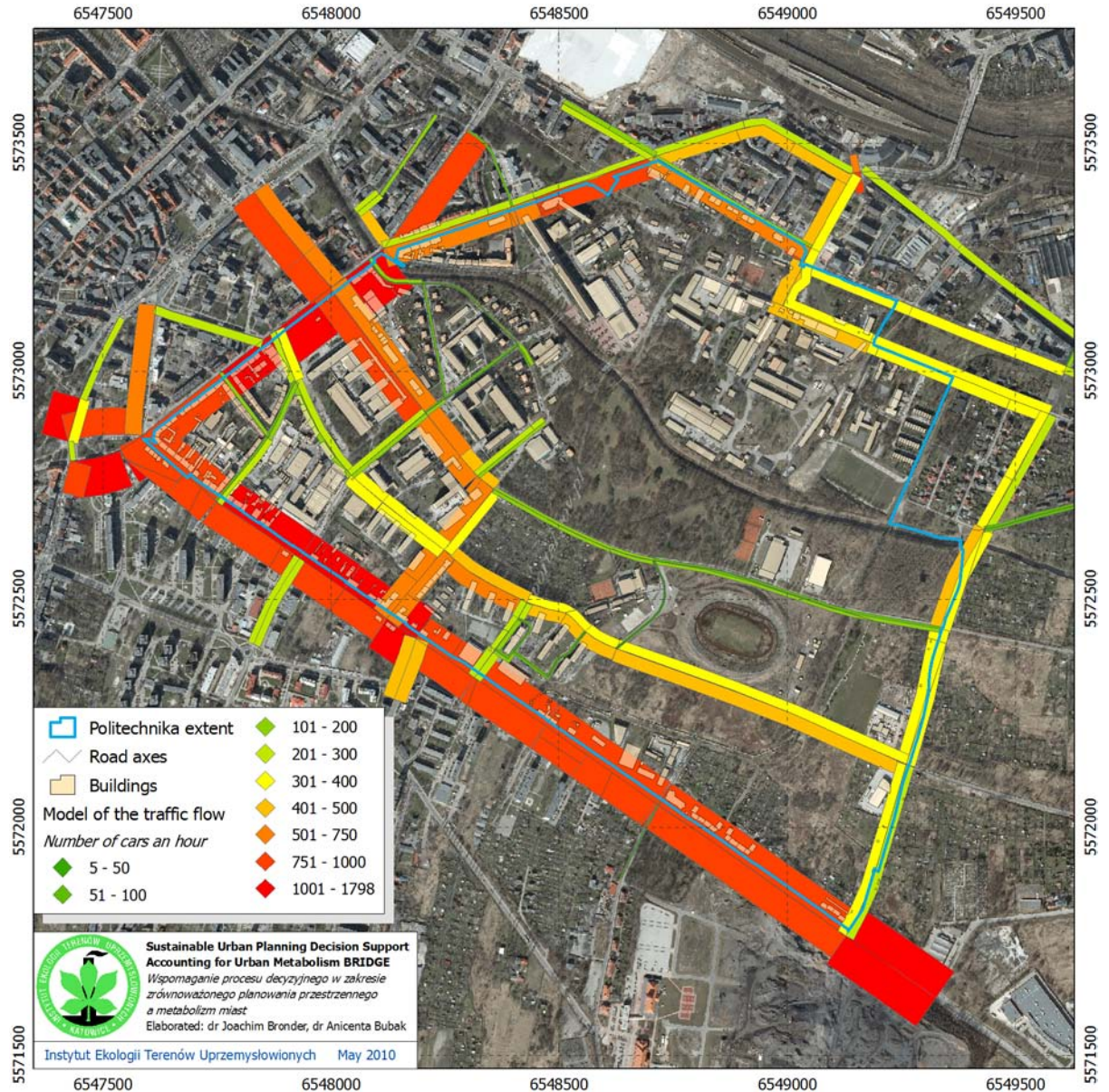


Figure 23. Traffic flow. Model for the year 2008

The information on traffic has been obtained from Inkom company (Figure 23). This company has experience in assessment traffic capacity, designing of engineering solution for transportation and so on. Besides above mentioned, spatial data on: (1) central heating network, (2) electricity network, (3) gas network, (4) water supply network, (5) sewerage network have been refined (Figure 24).



BRIDGE

GIS data and maps on spatial, socio-economic development and impact indicators

Deliverable no.: D.3.3.2
Contract no.: 211345
Document Ref.: 211345_008_TR_IETU
Issue: 1.0
Date: 30/11/2010
Page number: 37/39

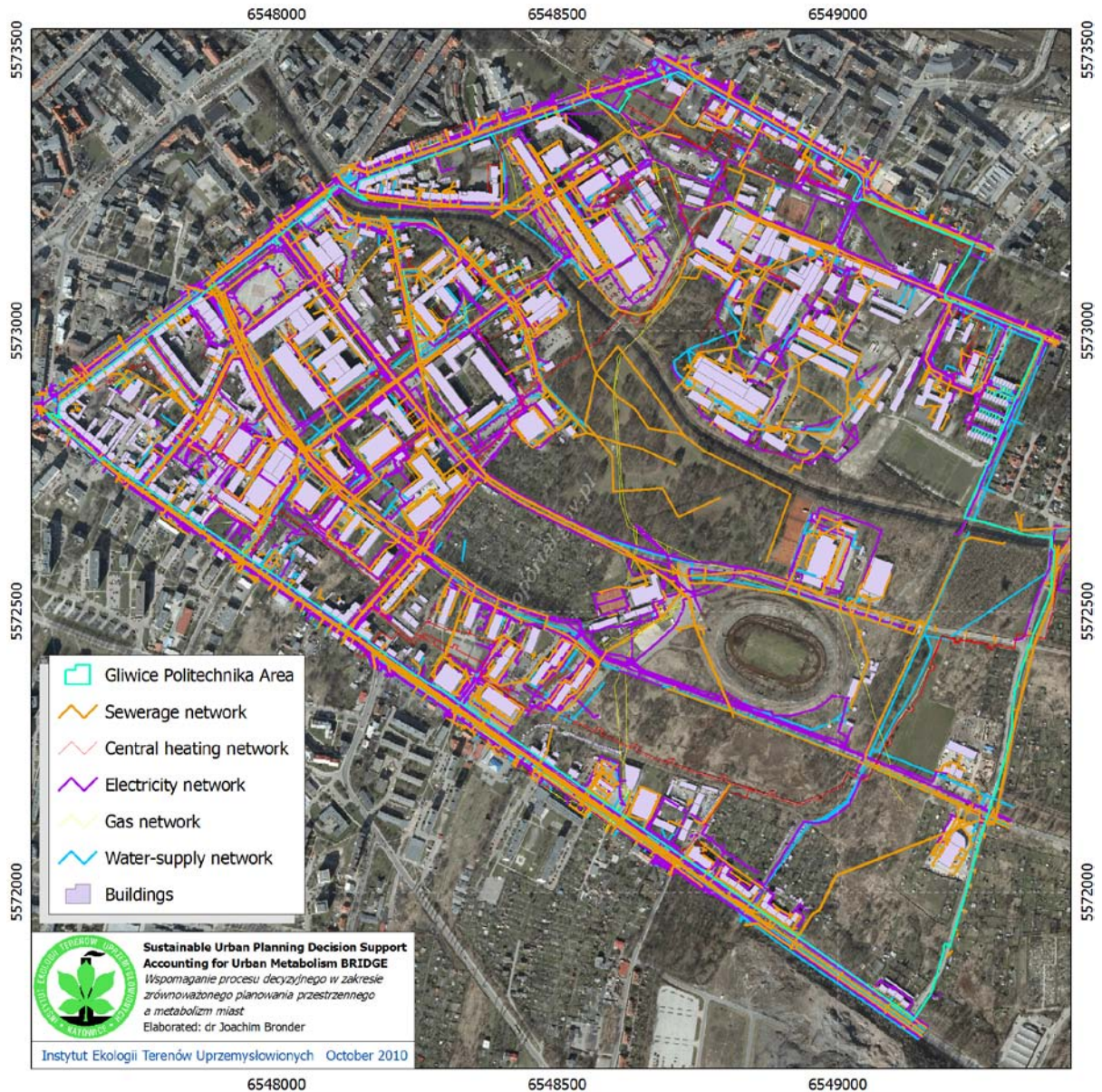


Figure 24. Linear facilities in Politechnika extent

Most of the described above data have been uploaded onto the server of the BRIDGE project. Data are available to all project partners. Zipped spatial data are located in “GIS” folder, located in “4. IETU” folder, which is located in “6. Partners Area” folder.

Besides that, spatial data, also about 20 map compositions and 2 presentation on Gliwice GIS are accessible from **map composition** and **presentation** folders.



BRIDGE

GIS data and maps on spatial, socio-economic development and impact indicators

Deliverable no.: D.3.3.2
Contract no.: 211345
Document Ref.: 211345_008_TR_IETU
Issue: 1.0
Date: 30/11/2010
Page number: 38/39

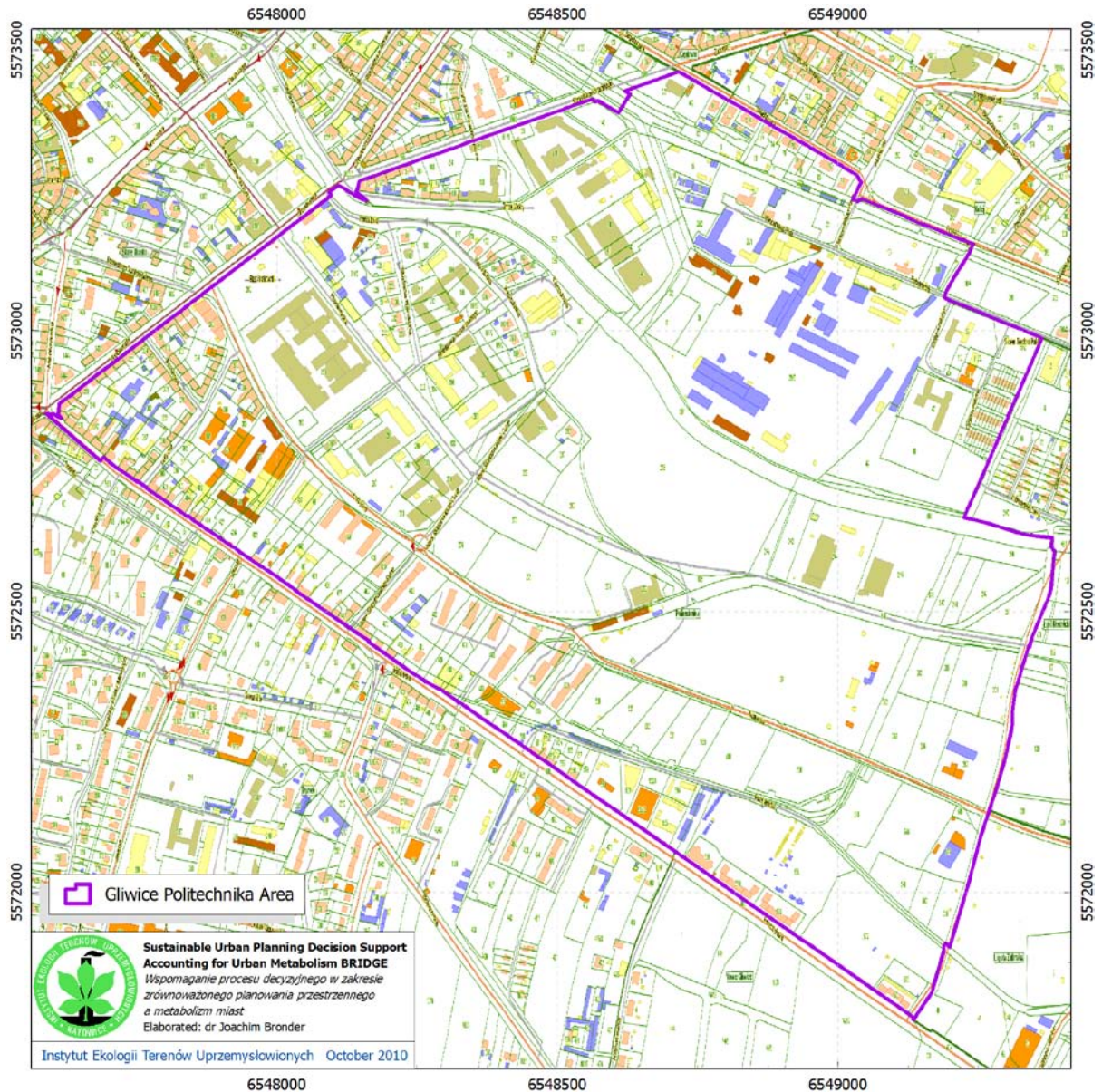


Figure 25. WMS map from Gliwice Town Hall server. Buildings main function, plot boundaries

Vegetation

The inventory of greenery areas was made using the following method:

Three types/ categories of greenery areas have been identified:

- area with trees exceeding 10m in height;
- area of allotment and house gardens;
- area of lawns, meadows and shrubs.

Inventory was made in the terrain during inspection of the entire district on foot.



BRIDGE

GIS data and maps on spatial, socio-economic development and impact indicators

Deliverable no.:	D.3.3.2
Contract no.:	211345
Document Ref.:	211345_008_TR_IETU
Issue:	1.0
Date:	30/11/2010
Page number:	39/39

During the field work, a GPS receiver was used with precision of position detection of 5m. GPS was used to mark points within the individual areas covered with greenery which were then allocated to one of the three identified categories.

The points were then input onto an aerial image, scale: 1: 2 000, and then individual greenery areas were contoured using the computer program, ArcGis (Figure 26).

By means of this program the aggregate areas within the individual greenery categories have been calculated:

- terrain covered with trees exceeding 10m in height – 51.15 ha;
- terrain covered with herbaceous greenery - lawns and meadows – 30.28 ha;
- allotment and house gardens – 12.46 ha.

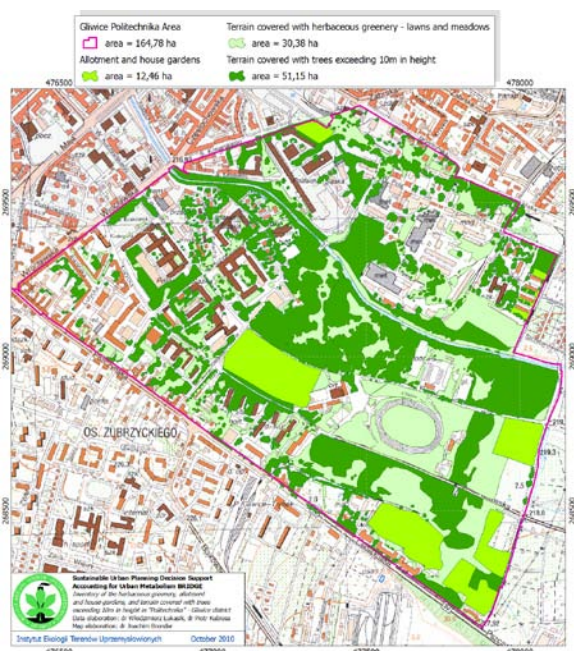


Figure 26. Vegetation in Politechnika District

3.5.3 Other no spatial data:

Air quality data and indicators: <http://stacje.katowice.pios.gov.pl/iseo/>

Population data and indicators:

- http://www.stat.gov.pl/gus/index_ENG_HTML.htm
- <http://www.gliwice.eu/>

Energy consumption data and indicators:

- http://www.pec.gliwice.pl/eko_ochrona.htm
- Vattenfall, Gliwice (direct contact via mail),
- Gasworks in Zabrze (direct contact via mail).

3.5.4 Contact info:

Anicenta Bubak: bubak@ietu.katowice.pl